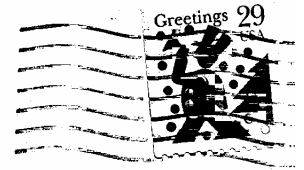


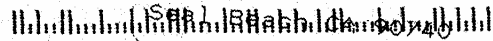
January 1994



THE OPAL EXPRESS
AMERICAN OPAL SOCIETY
P.O. BOX 382
ANAHEIM, CA 92815

Walter Lentz
13941 El Dorado Drive
66F

95745-4222 11

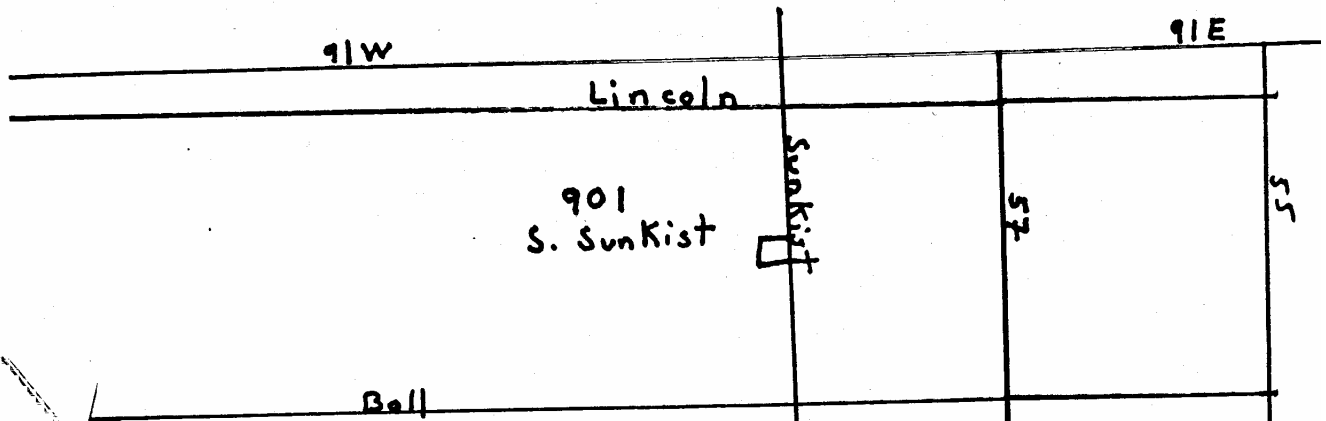


OFFICERS

- JAY CAREY - PRESIDENT (714) 525-7635
- DAVID BURTON - V. PRESIDENT (714) 827-5680
- TOM HAYS - TREASURE (714) 838-9262
- BONNIE BURTON - SECRETARY (714) 649-3130

31

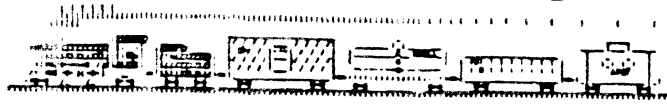
MEETINGS ARE HELD 2nd THURSDAY OF EACH MONTH FROM 6:30 - 9:00PM AT THE SUNKIST BRANCH OF THE ANAHEIM LIBRARY.





The OPAL EXPRESS

Published monthly by the
American Opal Society...



VOLUME # 26

This will be a short newsletter this month due to the Holidays. Just Like you we are very busy with holiday shopping and working. There are a few things that need your attention in the coming month.

The January meeting will be held on the 13th at 6:30. Before the speaker, we will have a very important business meeting. This meeting will be to finalize all the nominations for the election of new offices for the coming year. We need nominations for President, 1st and 2nd Vice President, Treasurer, and Secretary. We will be forming a team to work on the show and another team to organize trips. Also we will need to setup a team to arrange for speakers for each meeting or have people volunteer to find speakers. If you would like to help by volunteering or you have someone to nominate please come to the meeting and get your vote in. If you cannot make it to the meeting please call Edith Ostreder at 310-698-3985 or send them to the Opal Society. The voting will be at the February meeting. But if you can not be there we be sending out a ballot in the next newsletter.

The speaker for the meeting will be talking on silver and the making of silver jewelry. He has been working with silver and opals for many years and will have some very interesting things to tell us.

If you missed the Christmas Party you missed some good food, good company and great dessert. We had a nice turnout and talk of course turned to opals. We have a new member that has been to the Nowak Mine in Mojave, we hope he can be persuaded to help with the plans for a trip there.

Also don't forget beginning this year the dues for everyone are due the 1st of January. You may bring your dues payment with you to the meeting or use the form enclosed to send your dues in. Please, don't forget to send your dues in on time. We would hate to have to drop you from the mailing list of the newsletter. We will be using the newsletter to give you a list of the speakers and all the information on the trips and workshops will be in the newsletter. Also, and most importantly the ballots for voting for the new officers will be sent out in the next newsletter, as only current active members will be able to vote. The results of the voting will be in the newsletter. So please take time to make those checks out.

Well that is all far this month. We at the newsletter and all the officers of the Opal Society want to wish you and yours a Merry Christmas and a Happy New Year. Drive careful and may your new year be full of OPALS.

Debra Deno
Newsletter Editor

PRESIDENTS MESSAGE

This has been an historic year for the American Opal Society. We have solved most of the administrative and financial problems of the society and increased our membership. But, as with any society of our size, there are always more things that need to be done

First, we have to proceed with the election of new officers for the craning year. Edith Ostreder is the Chairman of the Nominating Committee. All members are urged to call her or write to her at the Opal Society address if they wish to nominate someone to run for office or would like to volunteer to run for an office. I would encourage everyone, particularly the new members to volunteer to participate in the society. We particularly need someone with a word processor to assist in the secretarial duties as our record keeping needs to be modernized.

I have enjoyed acting on your behalf as president of the society for the past two years. We have accomplished most of the objectives we set out to and now it is time for a change in leadership to go on to new things. I feel that it is important to get new ideas and attitudes periodically, this will keep the society healthy and growing. Perhaps some of the problems in the past were a result of personalities and individuals who were too entrenched in the workings of the society. In any event I'm sure the nominating committee will do a good job in selecting a slate of officers, and I'll be around when I'm not out of town, to serve on the board of Directors and help the new officers in any way I can.

Second, we need to ensure that we have interesting speakers for our monthly meetings. If any of you would be willing to prepare a talk please let the officers know. Also, if anyone is willing to search out and schedule a monthly speaker let us know. Perhaps the best way is to have a different person volunteer to get a speaker for each meeting or maybe set up a team of people to get the speakers This is something we need to decide at the January meeting Please let us know your thoughts on this important subject.

Thirdly, we need to obtain a new location for our workshop since Tom Hays has moved to Arizona and his place of work is no longer available to us. If someone has a garage or utility room that we could use please let us know. Also, an industrial site, preferably on a no cost or low cost basis, would do. This again is a top priority for 1994 since we have the equipment and just need a place to use it.

The fourth and last point I want to bring up is that the first of the year is the time we normally pay our dues. Many people paid in November at the show or mailed their dues in, but for many like myself, it is time to renew our memberships. If you have not paid our yearly dues please use the enclosed form to do so.

I have truly enjoyed working as your President the last two years and feel that the society is well positioned to meet the challenges of the future.

Your President, Jay Carey



American Opal Society, Inc.

P.O. Box 382
Anaheim, Ca 92815

The American Opal Society, Inc. is a non-profit organization, educational in nature, whose primary purpose is promoting interest in and knowledge of this precious gem. Our program is principally one of self help, plus assistance in developing knowledge related to opal by conducting meetings and programs, providing a monthly newsletter of Society and Chapter activities and information about opal, seminars, and an annual Opal and Gem Show & Sale.

Our members include artisans, craftspeople, designers, educators, and laymen whose vocation and/or avocation is opal. Initiation fees and dues are used to pay for the operations of the Society and its Chapters.

Present dues are:

Chapter Members:	\$10.00 Initiation Fee	
	\$26.00 Annual Dues	\$36.00 to Join
	(over 65 \$21.00)	\$31.00 to Join
Members-at-Large:	\$10.00 Initiation Fee	
	\$20.00 Annual Dues	\$30.00 to Join
	(over 65 \$15.00)	\$25.00 to Join
Foreign Members:	\$10.00 Initiation Fee	
	\$25.00 Annual Dues	\$35.00 to Join

Chapter members are those who live close enough to a Chapter to attend meetings and pay dues to a certain Chapter to enjoy the benefits of such. Members-at-Large are those who live a great distance away from an established Chapter or who do not wish to belong to a Chapter. Foreign members are those who live outside the Continental United States or Canada.

The American Opal Society, Inc. welcomes you. We believe that our present membership and you will gain both pleasure and knowledge in furthering the Society's goals.

MEMBERSHIP APPLICATION - AMERICAN OPAL SOCIETY, INC.

NAMES(S) : _____ DATE: _____

ADDRESS: _____ P.O. BOX _____

CITY: _____ STATE: _____ ZIP: _____

HOME PHONE: (____)____-____ BUSINESS PHONE: (____)____-____

OVER 65: YES () NO () AMOUNT ENCLOSED: \$_____ CHECK NUMBER: _____

OCCUPATION: _____

SPECIAL INTEREST(S): _____

Please fill out complete and return your check or money order in the proper amount to:

AMERICAN OPAL SOCIETY
P.O. BOX 382
Anaheim, CA 92815

APPROVED BY _____ MEMBERSHIP NUMBER(S) ASSIGNED: _____

() INITIATION FEE PD. () DUES PAID CHAPTER: () YES () NO